



MIAVANA

MIAVANA  
BY TIME + TIDE

*Scuba Diving in Uncharted Waters*



## MIAVANA DIVING

### *Below the surface*

The underwater world surrounding Miavana by Time + Tide is as untouched as it is unforgettable. With a remarkable range of dive sites, each dive offers something new to discover. Expect encounters with turtles, giant moray eels, and the occasional glimmer of pelagics like dogtooth tuna. From hidden caves to towering cabbage corals, the biodiversity here is astonishing. Best of all, it's yours alone to explore. Every experience is private, unrushed, and entirely yours.

## ACTIVITY CENTRE

Miavana's Activity Centre is a fully equipped PADI dive centre and the starting point for every underwater adventure. Whether you're an experienced diver or dipping your fins in for the first time, our instructors are here to guide you every step of the way. Certified divers can explore the reefs with a private guide (just remember to bring your dive card), while those wanting to learn can take advantage of our beginner courses right here on the island. A refresher is essential for anyone who hasn't dived in the past six months.

At the Activities Centre, we're fully equipped with quality dive gear. We use Divetek BCDs, regulators, tanks, masks, and fins with booties, as well as Aqualung fins for those who prefer full-foot options. Wetsuits come in both short and long sleeves from Divetek and Reef, so you'll be comfortable no matter the conditions. Hop aboard our 30ft dive boats for a single or double tank dive (weather permitting) and get ready to explore.

With top-quality gear, spacious dive boats, and a team who love nothing more than sharing the magic of the reef, everything is in place for an unforgettable experience.



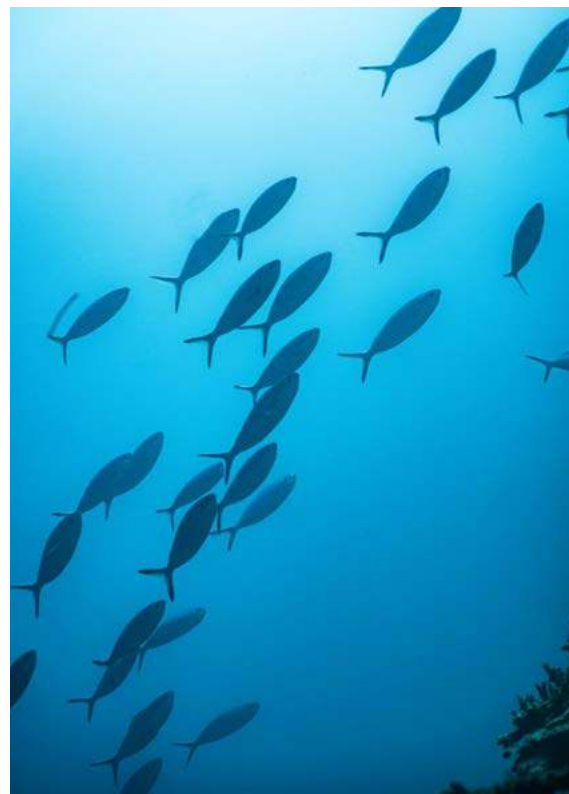


## MANAMBIBI MAZE

This is the perfect dive site for a beginner or experienced diver. With shallow depths, incredible coral pinnacles, and wide sand patches, it makes for the perfect first dive experience. The reef topography rises right up to the surface from 20m of depth, creating gullies and swim-throughs, allowing one to explore this reef like a maze of vibrant hard corals and beautiful tropical life at every turn. Marine diversity includes green and hawksbill turtles, paperfish, trumpetfish, and the occasional school of mobula rays.

+ 4m - 25m

+ 20 min boat ride from Activity Centre



## MANAMBIBI DROP-OFF

This site drops off quite rapidly with great coral health and diversity, containing a large variety of hard corals and sponges. This is a great site for all levels of certification, as being an extensive system, various depth contours can be maintained. Marine life in all shapes and sizes frequent this location—lobsters, green and hawksbill turtles, a huge array of tropicals, large groupers, and occasionally larger pelagic gamefish like giant trevally, to name a few.

+ 4m - 40m

+ 20 min boat ride from Activity Centre

## LOKI WALL

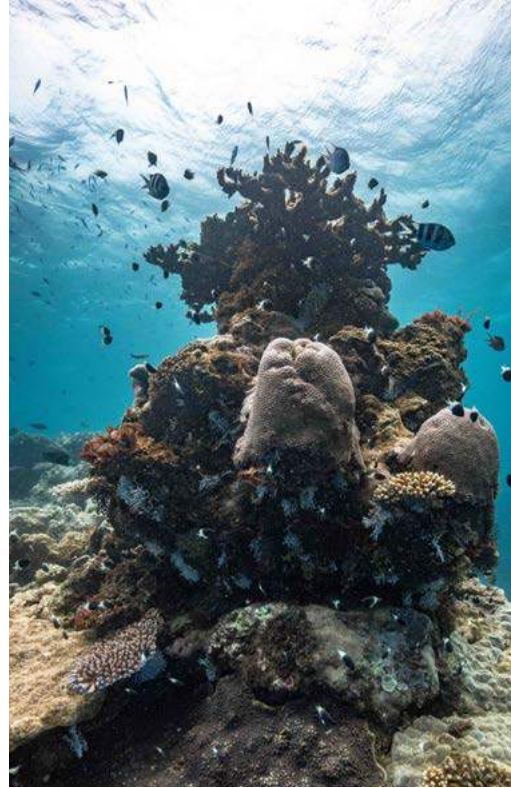
The site starts in 15m of water and drops to over 200m in depth, with some areas featuring a vertical drop. This drop-off is due to a large hole close to the river mouth. It's an exciting wall dive suitable for all certification levels of divers. The topography is very interesting, with massive gorgonian fans and an array of hard corals, along with diverse marine life.

On this dive, we have come across a wide variety of vibrant reef fish such as Napoleon wrasse, bluefin trevally, and tiger rock cod. We have also sighted many turtles and a couple of fantail rays in the shallows. Deeper down, there are ledges, fan corals, and larger species such as giant trevally and bass. While we haven't sighted any in a few months, we believe there is still a possibility of seeing sharks at this site.

This site is seasonal and is best dived outside of the rainy season due to its proximity to the Loki River. We recommend diving on an incoming tide, as the outgoing tide pulls sand over the drop-off, reducing visibility.

+ 15m - 200m+

+ 45 min boat ride from Activity Centre





## CORAL GARDENS

Very interesting site with good topography and lovely coral life forming parallel alleyways. Large honeycomb morays, Napoleon wrasse, and a couple of species of stingray are regularly sighted during dives. It tends to be sheltered by Nosy Manambibi during southerly winds, and very little current affects this location. Ideal for all levels of certification.

This is also a fantastic location for general snorkeling, and with one of Nosy Manambibi's beaches close by, it is the ideal spot for picnics combined with snorkeling or island walks. Safe and easy.

The site is located right next to a drop of around 80m; therefore, pelagics could well be spotted on occasion. The site is worth exploring more extensively.

+ 9m+

+ 20 min boat ride from Activity Centre

## THISTLE DOME GARDENS

This is a long, extensive reef system 10 minutes from the Miavana Activities Centre and consists of many really big, impressive dome coral bommies and a large variety of sponges. Soft corals are in abundance on this site, especially purple thistle coral gardens.

There tends to be a consistent south-north current on this site, and being an extensive system, it makes an ideal drift dive location, needing minimal effort to explore.

A few of the fish species seen include big shoals of Oriental sweetlips, fusiliers, royal angelfish, powder-blue angelfish, marbled groupers, green jobfish, a variety of moray eels, scissortail gobies, and a large variety of smaller gobies with helper shrimps.

A really wonderful reef system with the benefit of being close to home. It is ideal for new and experienced divers, and a haven of things to explore for those who like to look for the small things.

+ 10m - 15.2m

+ 10 min boat ride from Activity Centre





## POTATO PLAYGROUND

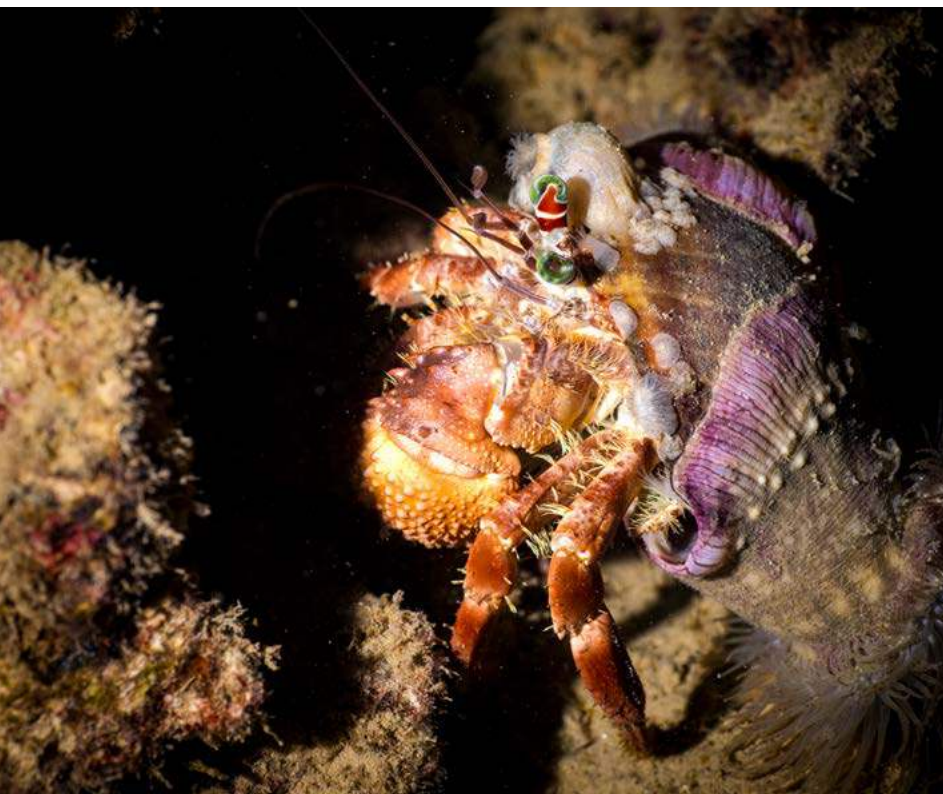
This pinnacle is approximately a 15-minute boat ride from the Activity Centre and is situated on the eastern side of the island. There is a lot of stunted coral growth in this area, possibly due to the depth range and the effects of rough seas during certain seasons. This, in turn, has created some interesting sandstone ledges that are home to a variety of grouper species.

On the northern side of the pinnacle, there is a large overhanging ledge that is home to a family of about eight potato bass, which are shy but regularly seen. Hawksbill and green turtles are occasionally spotted here, resting under the ledge. The sandy patch close to the ledge is abundant in small goby species with their helper shrimps.

This site is ideal for all levels of certification.

+ 8m - 16m

+ 15 min boat ride from Activity Centre



## CAVES AND GULLIES

An amazing dive site with incredibly dramatic topography, forming deep gullies and a number of caves and swim-throughs. This site also borders a very deep drop-off, which gives one a good chance to encounter large pelagic fish, rays, and octopus. Coral life is abundant, diverse, and in excellent condition.

Home to a huge variety of resident marine life such as morays, turtles, and electric rays. This site is open to all certification levels.

+ 9m - 24m+

+ 15 min boat ride from Activity Centre

## OASIS

This site is situated in the channel on the western side of the island. There are two adjoining pinnacles surrounded by sand, which attract a large variety of life. Green and hawksbill turtles, moray eels, shoaling yellowtail snapper, various juvenile sweetlips, and occasional large gamefish can be seen at this site. Ideal for all certification levels.

The only problem with this site is temperamental visibility; we suggest diving it during the last couple of hours of an incoming tide.

+ 11m - 18m

+ 20 min boat ride from Activity Centre





## MORA MORAY

This dive site is only a 10-15 minute boat drive from base and is ideal for all certification levels. This ledge runs from south to north for a couple of hundred metres and is home to a number of giant green moray eels, one or two in excess of 2m in length and as thick as a man's thigh. Hawksbill and green turtles can regularly be seen here, often sleeping under the ledge. Large ignobilis kingfish often surprise divers here and are always a sight to remember.

The structure consists of coral-covered boulders forming interesting gullies and lots of nooks and crannies, giving home to a huge variety of tropicals, snapper, and grouper species. The reef drops down onto sand at around 15m and at this contour makes for an easy dive.

+ 8m - 17m

+ 10 min boat ride from Activity Centre

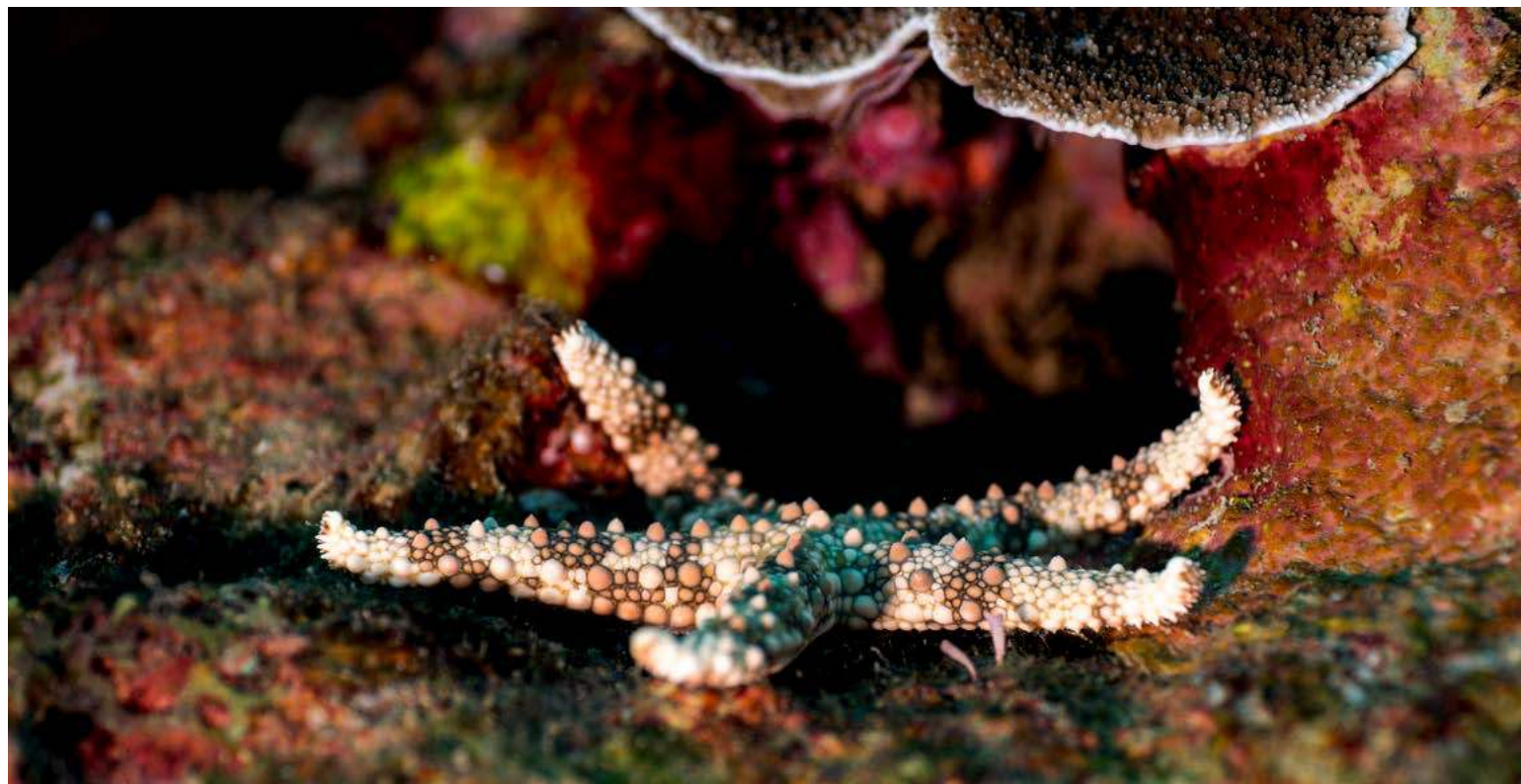
## HYSON'S WALL

This is an absolutely phenomenal deep dive site which starts in 20m of water and has a vertical drop going down to 230m, with the average dive depth being around 25m–35m. It is recommended for divers with advanced certification levels. The edge of the drop is literally covered with a forest of coral whips—we have never seen so many coral whips in one location. Gorgonian fans and black coral trees are also impressive here.

Large shoals of snapper, dusky rubberlips, and green jobfish are prevalent, and with such a deep drop-off, one stands a very good chance of sighting large pelagic fish like Spanish mackerel, dogtooth tuna, and a variety of other species found in the area. When dived, the site produced big shoals of rainbow runners, bonitos, and barracuda, as well as an amazing array of smaller fish life such as coachmen, fusiliers, and the incredible longnose hawkfish, which lives among the black coral trees.

+ 26m - 230m

+ 30 min boat ride from Activity Centre





## CABBAGE CANYONS

This dive site has some amazing topography, consisting almost entirely of cabbage coral formations in pristine condition. It is an extensive system with deep gullies between these formations, with lots of nooks and crannies for marine life to hide and be explored. Marbled grouper, large two-spot snapper, a large variety of parrotfish, honeycomb morays, and especially super-sized Napoleon wrasse frequent this site. This site is suitable for all levels of certification.

+ 8m - 22m+

+ 15 min boat ride from Activity Centre

An underwater photograph of a vibrant coral reef. The foreground is dominated by a large, textured coral formation with yellowish-green hues. In the background, the reef continues with various other coral species, including some with bright yellow plumes. The water is clear and blue, with sunlight filtering through from above.

MIAVANA

ISLAND SANCTUARY

BY TIME+TIDE

*Time and tide wait for no man,  
start your journey today.*

travel@miavana.com  
miavana.com

v20250515